

STEM BUILDERS **SECONDARY SCHOOL** **RESOURCE CATALOGUE** **2026**

Equipping Students with Practical Skills for the Future



• Investigate

• Analyse

• Apply



steminfoblh@gmail.com



www.stembuildersjm.com

Who We Are

STEM Builders Learning Hub is an education-focused organisation dedicated to strengthening science, technology, engineering, and mathematics education through hands-on, inquiry-based learning experiences.

Our secondary school resources are strategically designed to support:

- Practical, laboratory-based science instruction
- CSEC and CAPE curriculum alignment and examination preparation
- Coding, robotics, and engineering competencies
- Critical thinking, problem-solving, and analytical skills development



WHO WE SERVE

We partner with schools to transform STEM education—moving beyond theoretical knowledge to ensure students engage in authentic, experiential learning that prepares them for academic success and future careers.

This catalogue is designed for:

- **Secondary Teachers:** Comprehensive resources for Forms 1–6 (Grades 7–13)
- **Academic Departments:** Tailored support for Science, Technology, and Engineering departments
- **Extracurricular Programmes:** Enhanced resources for STEM and robotics clubs
- **Examination Preparation:** Targeted materials for CSEC and CAPE exams
- **Technical & Vocational Education:** Practical skills development for TVET programmes



www.stembuildersjm.com

• Investigate

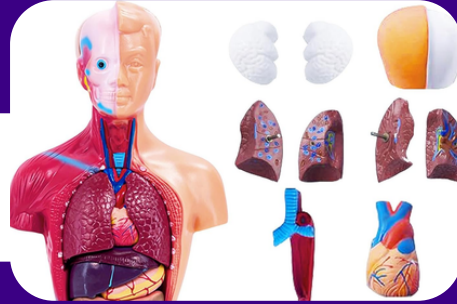
• Analyse

• Apply

SECONDARY SCIENCE LAB RESOURCES

Human Anatomy & Biology Models-
High-quality anatomical models that support the
teaching of the CSEC and CAPE curriculum.

✓ Human body
systems



✓ Organ sets (brain, heart,
lungs, digestive system)



✓ Comparative
anatomy models



Supports:
Biology, Integrated Science,
CSEC & CAPE practical
lessons

Science CSEC Investigation & Experiment Kits

STEM Builders' comprehensive, curriculum-aligned kits are designed to support practical work, laboratory skills development, and School-Based Assessment (SBA) investigations across the CSEC and CAPE syllabi.



Biology Kits



Chemistry Kits



Physics Kits



Science Kits

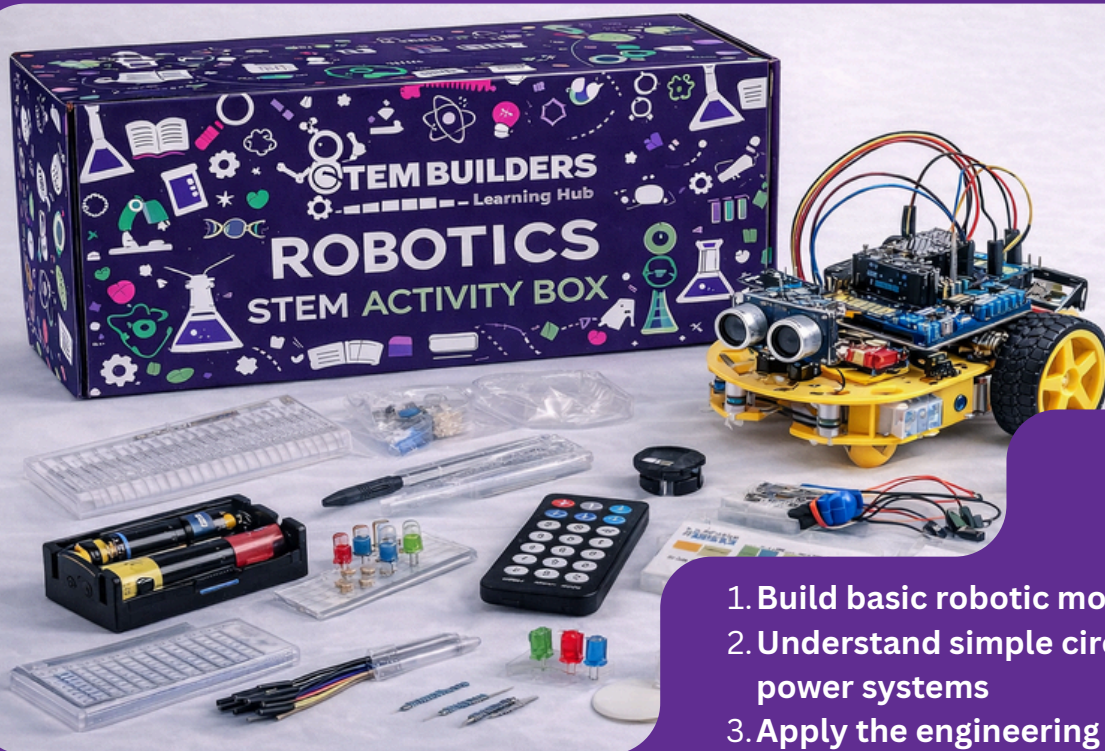


Students will:

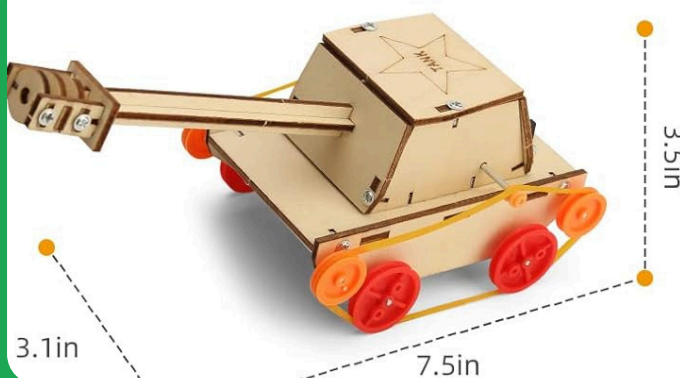
- Conduct guided investigations
- Collect and analyse data
- Develop practical laboratory skills

Robotics & Engineering Kits

Our Robotics & Engineering Kits are designed to introduce secondary school students to practical electronics, coding logic, and basic robotics, while strengthening problem-solving and engineering skills.



1. Build basic robotic models
2. Understand simple circuits and power systems
3. Apply the engineering design process



DIY electronics Kits

Ideal For: Secondary Schools (Grades 7–11), STEM & Robotics Clubs, Innovation and enrichment programmes, and Introductory robotics courses

• Investigate

• Analyse

• Apply



CUSTOM PROGRAMMES & BULK ORDERS



We offer:

- Customised kits aligned to school needs
- Bulk pricing for departments and institutions
- Support for clubs, competitions, and workshops

WHY SCHOOLS CHOOSE STEM BUILDERS

All our resources are developed by trained educators with extensive classroom and curriculum experience. Our kits are practical, age-appropriate, and designed with real classroom challenges in mind.

**Designed by
Experienced Educators**

Our resources are aligned with the CSEC and CAPE syllabi, supporting practical investigations, SBAs, and hands-on learning. Teachers can seamlessly integrate our kits into existing lesson plans.

**Curriculum-Aligned &
Practical**

Schools can customise kits based on grade level, subject focus, and available resources, ensuring maximum relevance and value.

**Flexible &
Customisable**

We have successfully partnered with schools and institutions island-wide, delivering impactful STEM programmes, resources, and teacher support.

**Trusted by Schools
Across Jamaica**

• Investigate

• Analyse

• Apply

LET'S PARTNER TO STRENGTHEN STEM EDUCATION IN YOUR SCHOOL

HOW WE WORK WITH PARTNERS

1. **Consultation** – We identify goals, target groups, and desired outcomes
2. **Co-Design** – Programmes and kits are customised to meet partner objectives
3. **Implementation** – Delivery through workshops, resources, or ongoing programmes
4. **Evaluation & Reporting** – Feedback, impact tracking, and recommendations

Get in touch and start/continue your STEM journey with us



876-846-4082



steminfoblh@gmail.com



Portmore, Jamaica



www.stembuilderjm.com



• Investigate

• Analyse

• Apply